

/ Perfect Welding / Solar Energy / Perfect Charging



SHIFTING THE LIMITS

# TPS 270i C PULSE TPS 320i C PULSE

/ MIG/MAG, TIG DC & MMA welding



/ With the TPS 270i C and the TPS 320i C, Fronius has succeeded in packing all the advantages of the TPS/i range into an even more compact design. These new compact versions complete the lower end of the TPS/i power spectrum in perfect fashion. Owing to their compact dimensions and built-in wirefeeder, they are a space-saving, portable and yet extremely powerful alternative to other members of the TPS/i series for construction sites and workshops in particular. With their broad range of applications, the TPS 270i C and the TPS 320i C are the ideal partners for carrying out repair work and maintenance tasks.

- / **COMPACT DESIGN**
- / **FOR UNIVERSAL USE**
- / **SUPERIOR WELD PROPERTIES**



## FOR UNIVERSAL USE

/ Every welding process - from MIG/MAG (steel, CrNi, aluminium application) and MIG brazing to TIG DC and MMA - can be carried out using a single unit thanks to the multi-process capability. A plethora of options, such as a TIG installation kit or a polarity reverser for welding special flux core wires, provides even greater flexibility to this unbelievably wide range of applications.



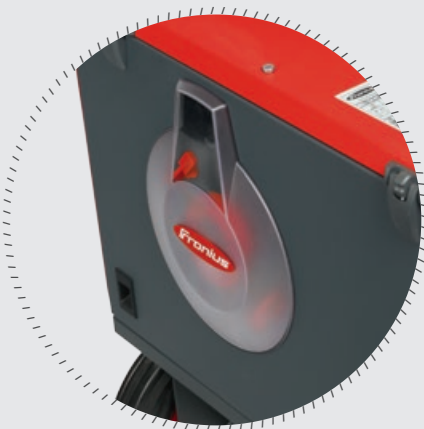
*/ The new, compact PullMig welding torch and the TPS/i compact models represent the ideal combination for applications involving soft filler metals (aluminium, CuSi3). Maximum wire-feed stability is achieved even over longer distances.*

## AVAILABLE TPS/i PROCESSES

/ The compact TPS 270i C and TPS 320i C are equipped with the Pulse process as standard. All other TPS/i processes, such as LSC, Standard and PMC, are available as an option.



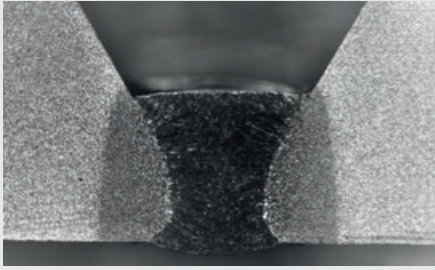
## TPS 270i C PULSE



*/ A viewing window to the wirepool on the TPS 270i C allows users to quickly ascertain how much wire remains.*

*/ A built-in wirefeeder guarantees a precise wire feed. The feed rollers are colour-coded depending on the diameter of the wire.*





*/The LSC Root characteristic even impresses on challenging root passes with a perfect root formation and penetration.*



*/ Using the SynchroPulse function provided as standard with all TPS/i devices, a weld-seam pattern comparable to that of a TIG weld seam can be achieved. A perfect weld-seam appearance is guaranteed.*



## TPS 320i C PULSE



*/The TPS 320i C is easily and intuitively controlled through its graphical user interface. The display is extremely robust, and users can operate it even with their work gloves on.*



*/The TPS 270i C features a compact control panel with a dot-matrix display, allowing every menu item to be shown in plain text.*



*/ Compatible remote controls are also available depending on the requirement.*

**TECHNICAL DATA**

	TPS 320i C PULSE	TPS 320i C PULSE/nc	TPS 320i C PULSE/MV/nc	TPS 320i C PULSE/S/nc
Mains voltage -10/+15%	400 V	380–460 V	200–230 V / 380–460 V	460–575 V
Welding current range	3–320 A			
Welding current at 10 min / 40 °C (104 °F)	320 A 40% DC 260 A 60% DC 220 A 100% DC			
Working voltage: MIG/MAG TIG Rod electrode	14,2–32,0 V 10,1–22,8 V 20,4–32,8 V			
Open circuit voltage	71 V	82 V	82 V	85 V
Degree of protection	IP 23			
Dimensions l/w/h	706 x 300 x 510 mm / 27.8 x 11.8 x 20.1 in.			
Weight	35.8 kg / 78.9 lb	34.7 kg / 76.5 lb	34.7 kg / 76.5 lb	33.1 kg / 73.0 lb

	TPS 270i C PULSE	TPS 270i C PULSE/nc	TPS 270i C PULSE/MV/nc	TPS 270i C PULSE/S/nc
Mains voltage -10/+15%	380–460 V	380–460 V	200–230 V / 380–460 V	460–575 V
Welding current range	3–270 A			
Welding current at 10 min / 40 °C (104 °F)	270 A 40% DC 220 A 60% DC 190 A 100% DC			
Working voltage: MIG/MAG TIG Rod electrode	14,2–27,5 V 14,1–20,8 V 20,4–30,8 V			
Open circuit voltage	66 V	66 V	66 V	68 V
Degree of protection	IP 23			
Dimensions l/w/h	687 x 276 x 445 mm / 27.0 x 10.9 x 17.5 in.			
Weight	32.7 kg / 72.1 lb	32.2 kg / 71 lb	33.95 kg / 74.8 lb	32.1 kg / 70.8 lb

/ Perfect Welding / Solar Energy / Perfect Charging

### WE HAVE THREE DIVISIONS AND ONE PASSION: SHIFTING THE LIMITS OF POSSIBILITY.

/ Whether welding technology, photovoltaics or battery charging technology – our goal is clearly defined: to be the innovation leader. With around 3,300 employees worldwide, we shift the limits of what's possible - our record of over 900 granted patents is testimony to this. While others progress step by step, we innovate in leaps and bounds. Just as we've always done. The responsible use of our resources forms the basis of our corporate policy.

Further information about all Fronius products and our global sales partners and representatives can be found at [www.fronius.com](http://www.fronius.com)

v05 May 2015 EN

**Fronius Canada Ltd.**  
2875 Argentia Road, Units 4,5 & 6  
Mississauga, ON L5N 8G6  
Canada  
Telephone +1 905 288-2100  
Fax +1 905 288-2101  
[sales.canada@fronius.com](mailto:sales.canada@fronius.com)  
[www.fronius.ca](http://www.fronius.ca)

**Fronius USA LLC**  
6797 Fronius Drive  
Portage, IN 46368  
USA  
Telephone +1 877 FRONIUS  
[sales.usa@fronius.com](mailto:sales.usa@fronius.com)  
[www.fronius-usa.com](http://www.fronius-usa.com)

**Fronius UK Limited**  
Maidstone Road, Kingston  
Milton Keynes, MK10 0BD  
United Kingdom  
Telephone +44 1908 512 300  
Fax +44 1908 512 329  
[info-uk@fronius.com](mailto:info-uk@fronius.com)  
[www.fronius.co.uk](http://www.fronius.co.uk)

**Fronius International GmbH**  
Froniusplatz 1  
4600 Wels  
Austria  
Telephone +43 7242 241-0  
Fax +43 7242 241-953940  
[sales@fronius.com](mailto:sales@fronius.com)  
[www.fronius.com](http://www.fronius.com)